

Marine Litter



Lyme Bay
Fisheries and
Conservation Reserve

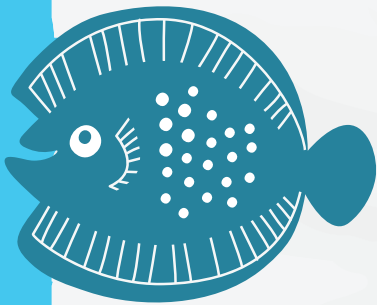


Extension Tasks



*A series of tasks and
challenges about marine litter
found in and around Lyme Bay*

KS2 & KS3



**BLUE MARINE
FOUNDATION**

Brought to you by the Blue Marine Foundation.

Marine Litter in Lyme Bay



A series of extension tasks linked to marine litter.



Extension Idea

➡ Why are supermarkets stopping the sale of products with microbeads in them?

Research Activity (See Teacher's Notes for answers).

- What are microbeads?
- Why are they about to be banned in the UK?
- What products contain them?
- What might manufacturers use instead of microbeads?



Extension Idea

➡ How much plastic does your school produce?

Recycling is good but reducing use is even better.

- Get the students to collect plastic rubbish and recycling from around the school over the course of a week or so.
- Make a tally chart of what types of plastic objects are being collected and from where (e.g. yr1: 8 paint bottles; 4 plastic food packaging; 20 milk bottles, yr5: 3 plastic toy wrapping; 1 milk bottle; 12 plastic cups) you could use this data to make bar charts depending on the ability of the pupils.
- Get the pupils to come up with ideas of what they could make with all the plastic they have collected. Choose one or 2 (the bigger you can make them the better, though several small ones would work too).
- Make your object (e.g. a boat, bike, animal, beach scene) using the plastic.
- Display in the school so parents, carers, visitors and pupils can see how much plastic is being produced by the school.





Extension Idea

➡ How can you reduce marine litter?

- Pupils can make a poster or a leaflet outlining ways the school, parents, local community can all play a part in helping to reduce marine litter. Even if you don't live by the sea there are things you can do especially as rivers and streams eventually reach the sea.
- If you don't live near the sea at all then you might like to make as a check list for people to consider when they go on holiday.



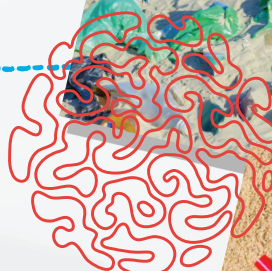
Extension Idea

➡ Data task – rubbish in Lyme Bay

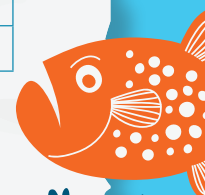
This is the data collected from the Seaton beach cleans between 2006 – 2015. The data can be split depending on ability.

(Printed data sheet supplied).

- Lower ability pupils may only want to attempt one type of rubbish over the years
- Glass has numbers all below 45 which is nicer for scaling
- Rubber are all below 100 etc.
- You can pick and choose as much or as little data as you wish to suit your group.



Year	Rubber	Cloth	Paper	Wood	Metal	Glass
2006	37	181	15	23	80	1
2007	5	18	25	21	22	5
2008	36	150	35	52	63	43
2009	23	19	31	36	73	12
2010	41	69	356	103	162	19
2011	27	55	38	48	142	6
2012	70	80	162	88	128	39
2013	83	85	202	105	169	26
2014	53	110	238	130	241	9
2015	92	104	199	131	254	15





The Schools Outreach Programme is delivered by the Lyme Bay Fisheries and Conservation Reserve – a marine reserve in Lyme Bay, which straddles the border between Dorset and Devon and is funded by Marks and Spencer.

The Lyme Bay Reserve is facilitated by the Blue Marine Foundation (BLUE) – a marine conservation charity which aims to solve the crisis in the oceans through providing innovative solutions to overfishing and enabling the creation of marine reserves.

BLUE's pioneering work in Lyme Bay uniquely engages fishermen to take a lead role in the conservation of their fishery providing long term benefits to marine life, fishers and the local community. In celebration, BLUE has established a Schools Outreach Programme to inform the wider public – young and old – about the quiet revolution that has happened on their doorstep.

For more information about our School's Outreach Programme email: info@lymebayreserve.co.uk or visit www.lymebayreserve.co.uk/education



We'd love to hear what you thought...

We are constantly improving our Schools Outreach Programme and your feedback would be extremely beneficial to us. Please take five minutes to fill in the feedback form emailed to you once you have tried out these activities so that they can be improved as necessary to make the activities the best they can be – thank you.



Facilitated by the Blue Marine Foundation



Funded by Marks & Spencer



JUNE21